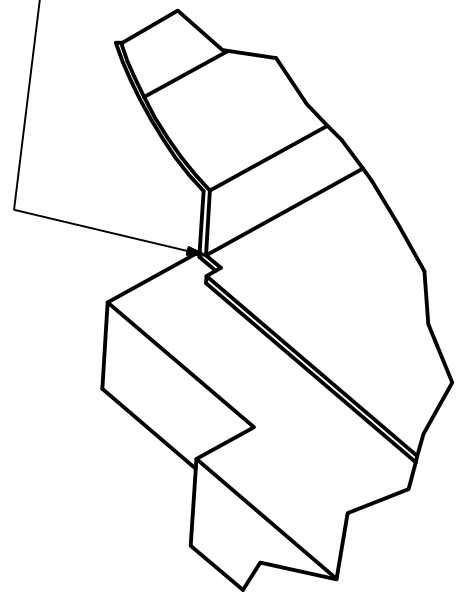


Notes: Install Copper Fingers

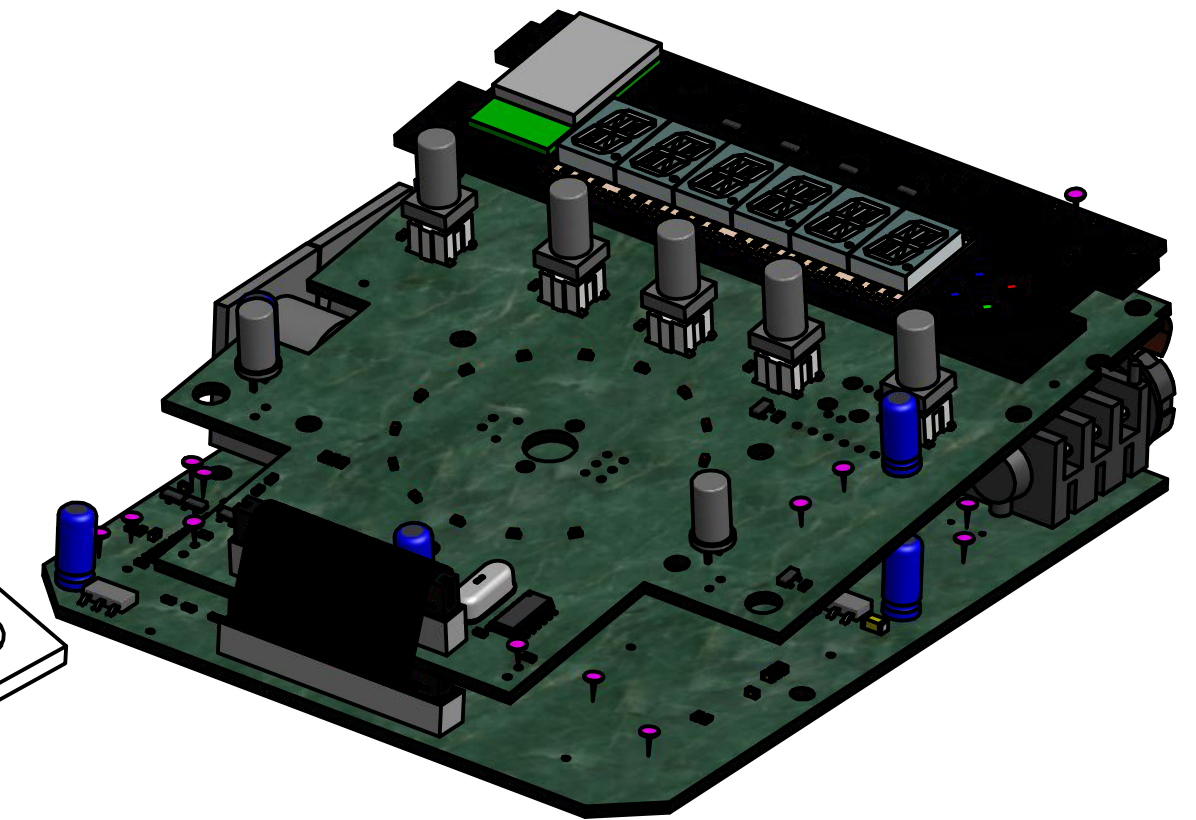
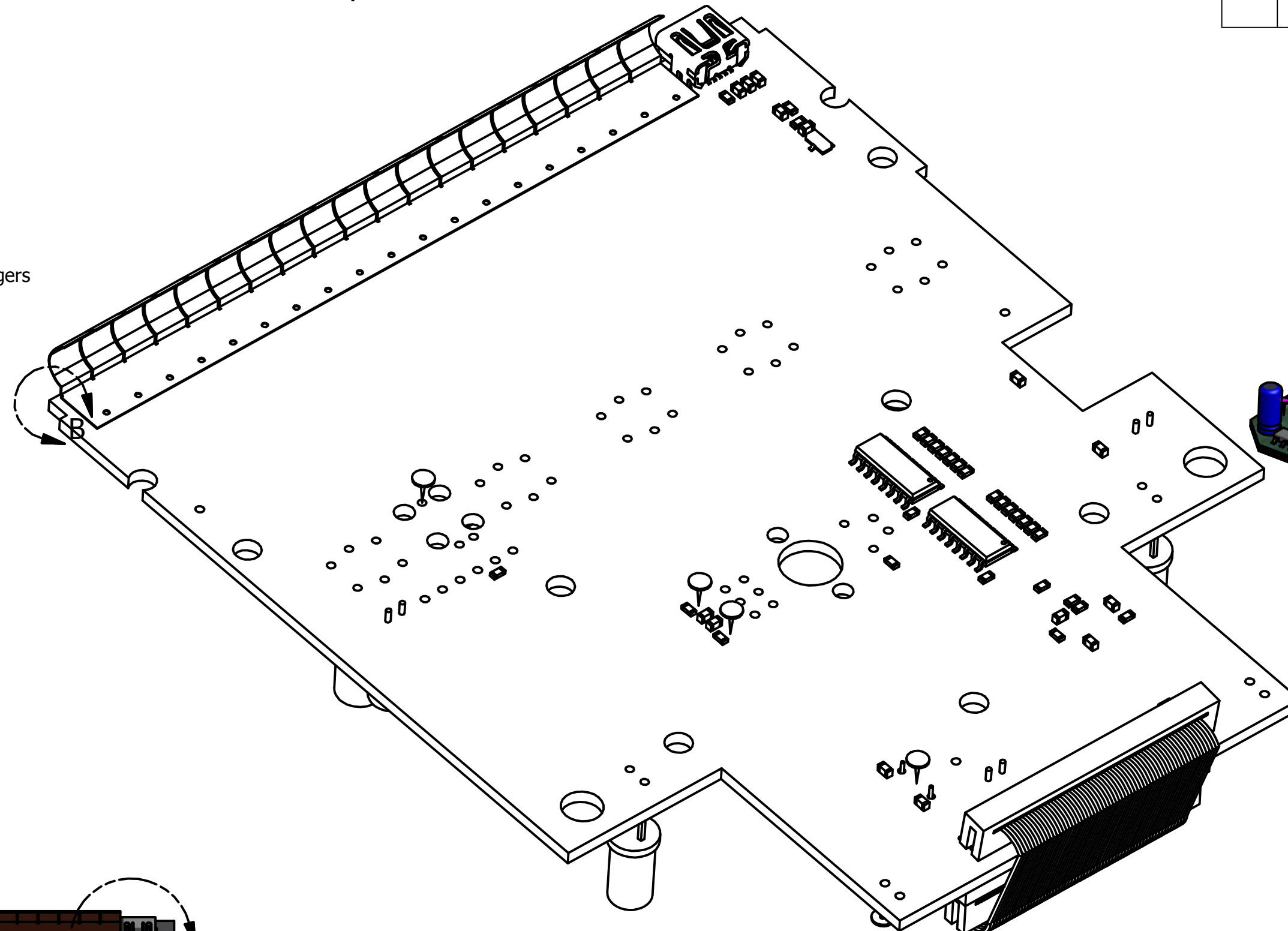
- 1: Cut copper finger 324191 3.25" and install as shown.
- 2: Coat exposed copper on PCB with solder paste and sweat 324191 to PCB with high-wattage iron
- 3: Holes in strip may be used to aide location of strip.

REVISION HISTORY				
ZONE	REV	DESCRIPTION	DATE	APPROVED
	P	Added Copper Fingers ECN1702	7/1/2013	MKOLMOS
	L	NEW PCB and BOM ECN1724	7-5-2013	MKolmos
	M	Moved copper fingers to edge of board, Changed RES for LED issue ECN1762	11/15/2013	MKolmos
	N	Changed CODEC chip, ECN1769	1-8-14	MKolmos
	P	Changed Resistor	3-12-14	MKolmos
	S	Updated notes for sweating copper	4/1/2014	MKolmos
	R	ECN1805, boot software to 4.8.0	5/13/2014	MKolmos
	S	ECN1925, new EEPROM software and GND wire CN902	10/9/2015	MKolmos

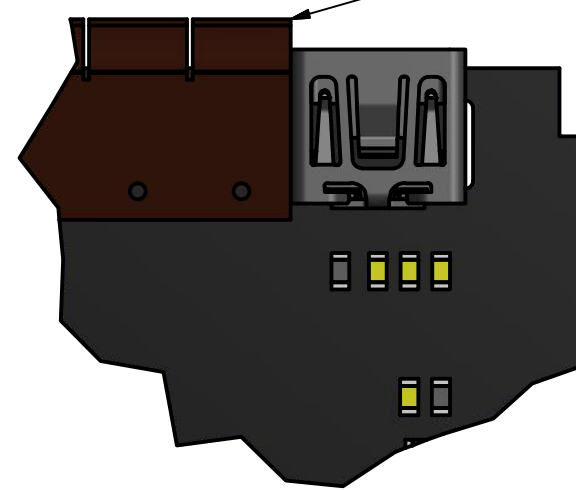
Align where bend of copper fingers begin with edge of board.



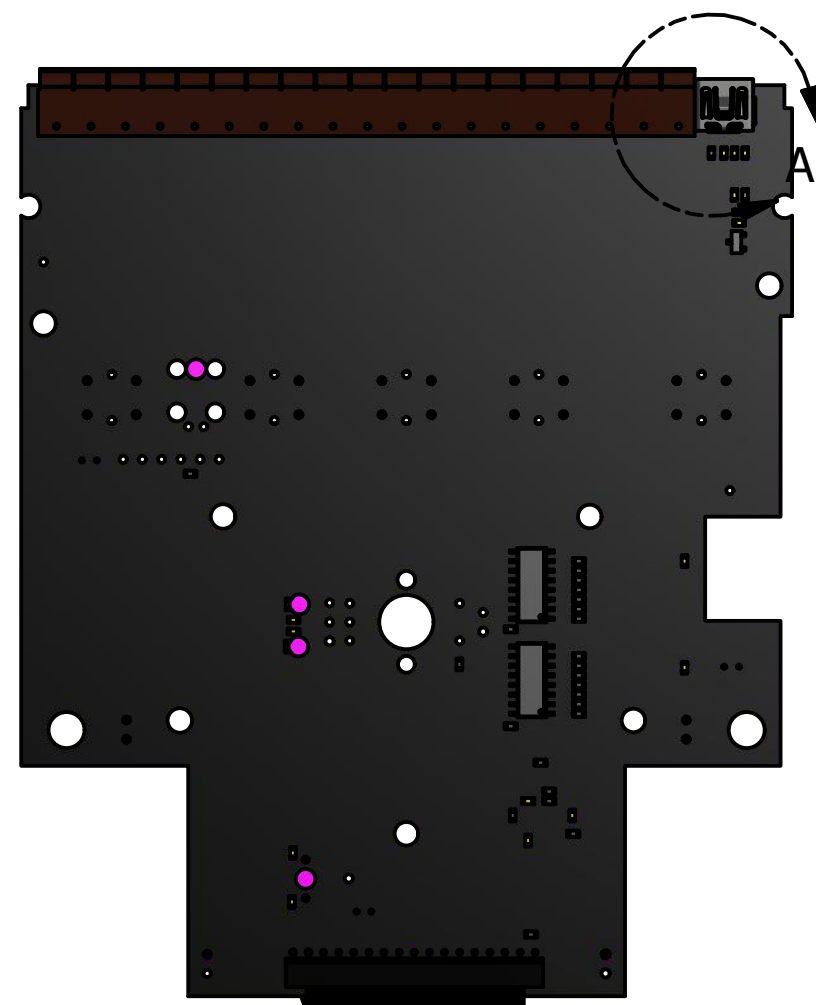
DETAIL B
SCALE 10



Fingers extend slightly past USB connector



DETAIL A
SCALE 3 : 1

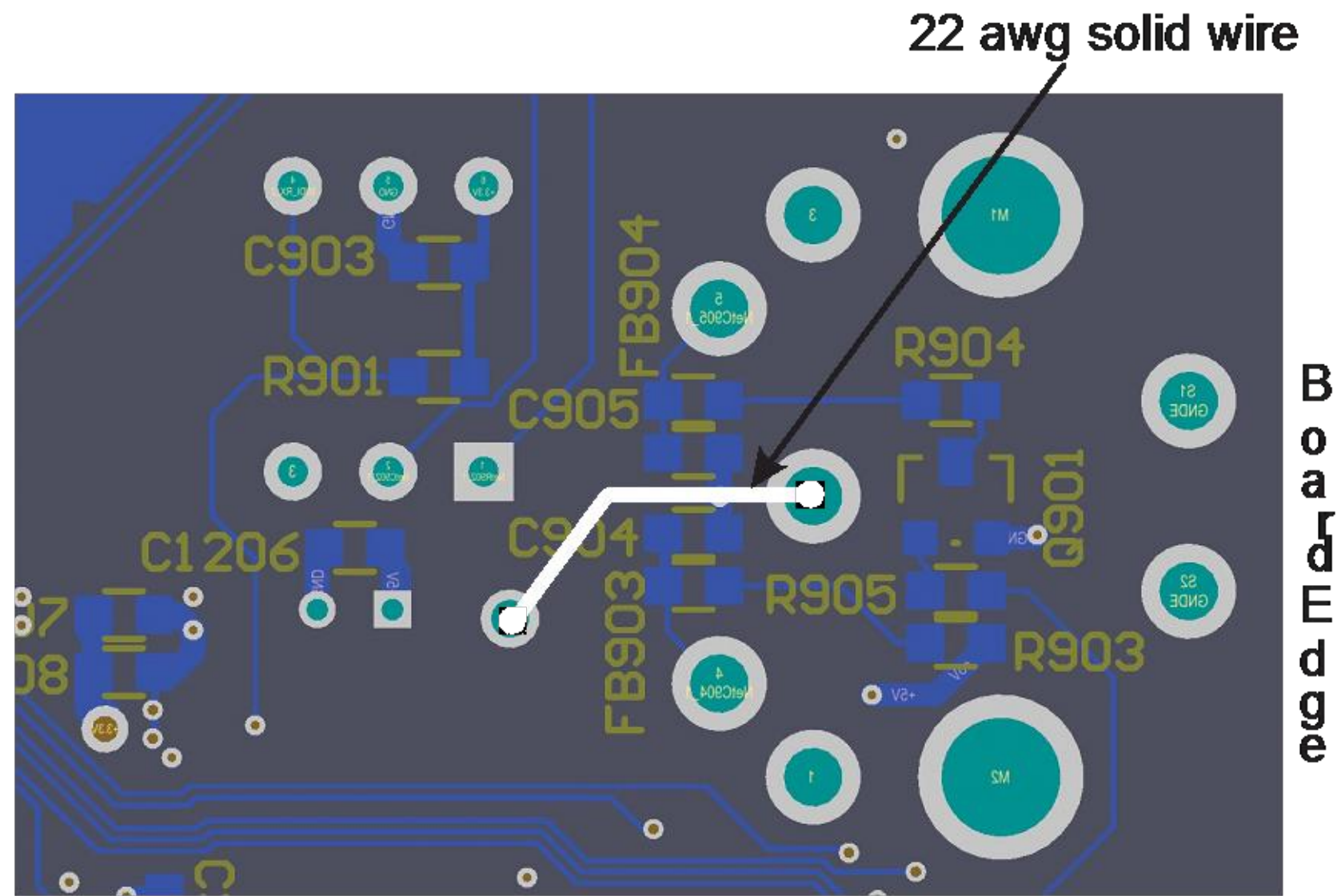


UNLESS OTHERWISE SPECIFIED DIMENSIONS ARE IN INCHES TOL: .XX DIM± .03, .XXX DIM± .005 ANGLES ± 5° REMOVE ALL BURRS, BREAK ALL SHARP EDGES		DRAWN mkolmos 7/1/2013	EVENTIDE One Alsan Way, Little Ferry, New Jersey 07643	
MATERIAL: "Mateiral"		CHECKED	TITLE	
FINISH: "Finish"		QA	Assy, Eventide H9 Main PCB	
DO NOT SCALE THIS DRAWING		MFG		
		APPROVED	SIZE C	DWG NO 102274
			SCALE	REV S
			SHEET 1 OF 2	

H9 Modification to connect pin 2 of CN902 to GND

Connect pin 2 of CN902 to TP1210 on underside of board using 22 awg solid copper wire. The wire may be tinned or insulated as available, but should not short to any other tracks or components.

Note that the graphic below shows a Rev D motherboard - other revs may be different.



CN902 ground mod.cdr

Board Edge

UNLESS OTHERWISE SPECIFIED DIMENSIONS ARE IN INCHES TOL: .XX DIM± .03, .XXX DIM± .005 ANGLES ± 5° REMOVE ALL BURRS, BREAK ALL SHARP EDGES		DRAWN mkolmos 7/1/2013	EVENTIDE One Alsan Way, Little Ferry, New Jersey 07643	
MATERIAL: "Mateiral"	QA		TITLE Assy, Eventide H9 Main PCB	
FINISH: "Finish"	MFG			
	APPROVED		SIZE C	DWG NO 102274
DO NOT SCALE THIS DRAWING			SCALE	REV S
			SHEET 2 OF 2	