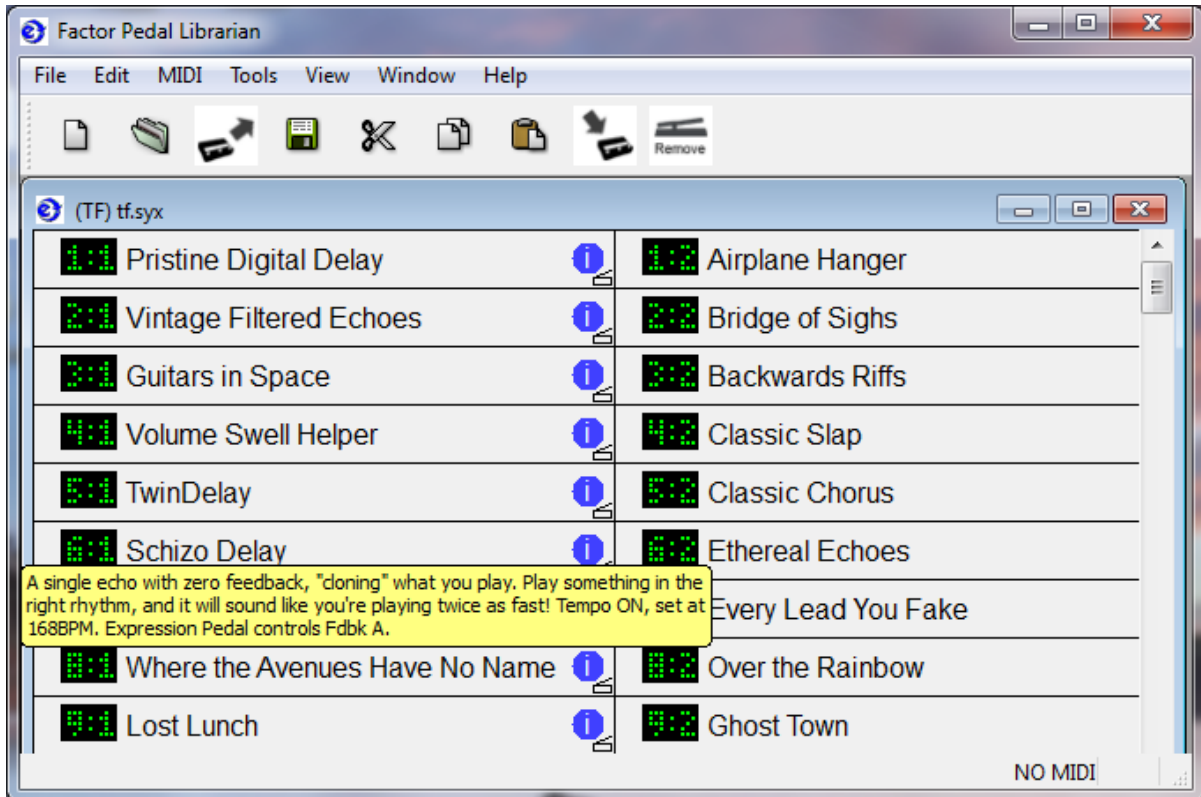


FactorLib User Manual

FactorLib is an application for either Windows or OSX allowing the user to manipulate presets from an Eventide stompbox. It may be thought of as a Library Manager and can be used to archive, delete or re-order presets, as well as uploading or downloading them via MIDI or USB. It also has facilities to edit presets and to remotely control a connected pedal.

FactorLib operates the same way on either supported platform – this document shows the Windows version, but the Mac version is very similar, just more hip.

This document applies to FactorLib V2.0 and above. For *Installation* instructions as well as details of supported operating systems, see page 8.



Each collection of presets is viewed as a *document*, and has its own window.

Each preset is shown with its bank and preset number, along with an optional title and comment. The titles are supported by software V3.0 and above, while the comments displayed are not currently supported by the Eventide stompboxes. In the view above, the green numerals are the Bank and Preset numbers and cannot be directly changed (the presets may be re-ordered but these numbers are always sequential). Space has no banks, just numbers. A preset's comment (yellow block above) may be displayed by moving the mouse over its (i) symbol. The small graphic to the immediate lower right of the (i) symbol indicates that one or more knobs have been configured to be controlled by an expression pedal.

When FactorLib is first started, the TimeFactor, ModFactor, PitchFactor and Space factory presets will be available as Recently Used files (see *File Menu* below). These can be found in the FactorLib installation folder (Windows) or /Library/Application Support/FactorLib (Mac).

FactorLib User Manual

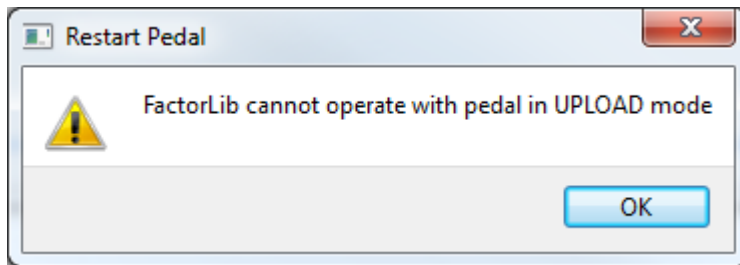
It is not possible to (for example) send TimeFactor presets to a PitchFactor, as this makes little sense and will not usually have the expected result.

MIDI Setup

FactorLib can be used "off-line" to manipulate presets on a computer, but it is most useful when used with a connected Eventide Stompbox, connected via MIDI or USB.

If, within a few seconds of startup, you see "MIDI" on the bottom right corner of the FactorLib window, all is well. If instead, you see "NO MIDI" (as in the screen on the previous page), FactorLib is not communicating with your pedal. Power cycle the pedal, check cables, and try *MIDI Config* on page 5.

Note that if it is desired that FactorLib communicate with a pedal via MIDI or USB, the pedal must be in the normal operating mode, not UPDATE mode.



FactorLib User Manual

Mouse Operations

Selecting Presets

A single preset may be selected by left-clicking on it with the mouse. A range of presets may be selected by clicking on the first in the range and then clicking on the last with the Shift key held down. Individual presets may be added to a selection by clicking on them with the Ctrl (*command* ⌘ on Mac) key held down. Selected presets are shown in yellow.

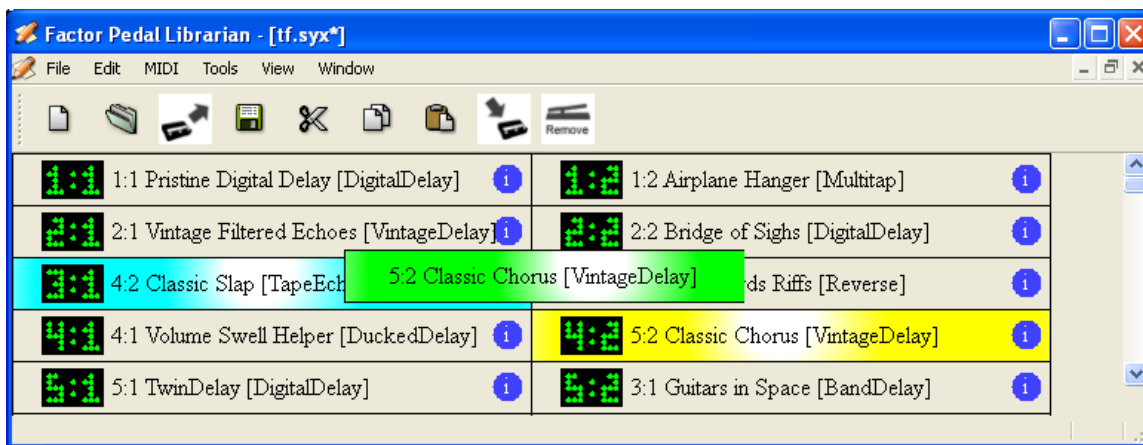
Moving Presets

Presets may be moved by clicking on one or more selected presets and dragging the selection to another position, but if the Ctrl (*command*) key is held down before the mouse is released (or the destination is in a different document), the selection will be copied rather than moving it. If the Shift key is instead held down, the selection will replace the destination presets. If you make a mistake here, you can always *undo* it (see below).


The destination will be shown in blue, with the moving preset(s) shown in green. It is possible to move to a point after the last preset to add to the end.

Note that moved or copied presets will be placed in front of the destination, which can cause mild visual confusion if the preset(s) is (are) *moved* from a place before the destination – in this case the presets will appear to be moved one place too early. But, of course, it is not.

Presets can be copied from other *documents* or indeed other copies of FactorLib. Note that the *move* option is only available when source and destination are in the same document. For obvious reasons, it is not possible to copy presets to a document belonging to a different member of the Factor family.



Changing a preset's title or comment

A preset's title may be changed by double-clicking on it and editing it in the normal way. Similarly, a comment may be changed by double-clicking on the  symbol. This will work even if it is hidden by the yellow comment box.

FactorLib User Manual

Menu Commands

FactorLib has a number of menus, many of whose commands have icons which are visible on the toolbar below the menus. If the mouse is moved over an icon on the toolbar or over a menu item, a description of its function will appear on the *status bar* at the bottom left of the FactorLib display. A menu of available commands can also be accessed by clicking the right mouse button when positioned over the document.

File Menu

New

Create an empty document

Open

Open an existing document

Open from MIDI

Create a new document by downloading presets from an Eventide stompbox. Note that only the currently enabled banks (presets for Space) will be sent. (See [UTILITY]BANKS (or PRESETS) to change these). If a Factor pedal is connected, the lower right of the FactorLib window will read MIDI, then LOADING. The download process can take several minutes, and is accompanied by screen and LED activity on the pedal.

Close

Close a document. If the document had changed, you will be asked if you want to save it.

Save

Save a document to disk.

Save As...

Save a document with another name (make a copy).

Add Preset (from file)

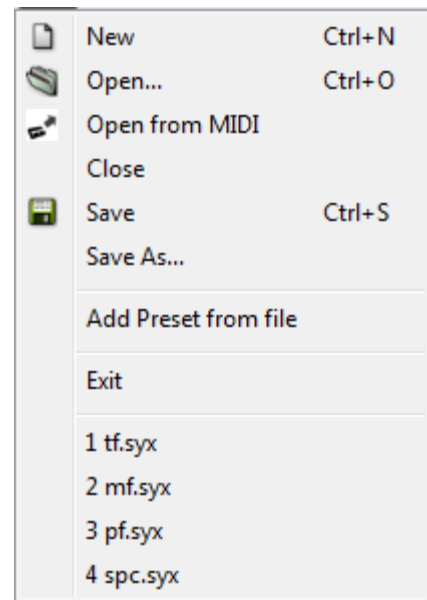
Add a MIDI sysex dump file as a preset. This can also be done by clicking on a suitable file and dragging it to the window.

Exit

Close the FactorLib application. You will be prompted to save any changed documents.

Recent Documents (1.,2. etc)

An easy way to reload recently used documents. When FactorLib is first started, the TimeFactor, ModFactor, PitchFactor and Space factory presets will be available as Recently Document files. Later, they can be found in the FactorLib installation folder (Windows) or /Library/Application Support/FactorLib (Mac). These should not be overwritten.



FactorLib User Manual

Edit Menu

Undo

Undo the last command – this is a very useful way to recover from mistakes. A large number of previous commands may be undone.

Cut

Remove the currently selected text or preset(s) and copy it (them) to the clipboard.

Copy

Copy the currently selected text or preset(s) to the clipboard.

Paste

Copy the text or preset(s) on the clipboard to a position just before the currently selected point. If no preset is selected the copied preset will be moved to the end of the document.

Select All

Select all presets.

Select Pedals

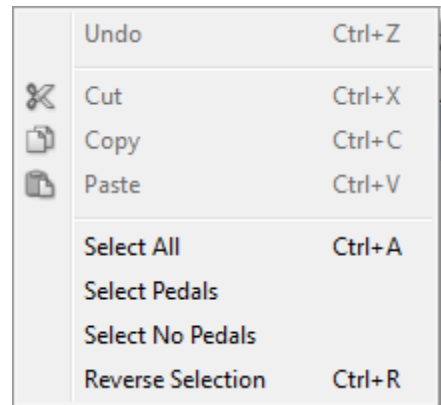
Add all presets with expression pedal settings to the current selection.

Select No Pedals

Add all presets without expression pedal settings to the current selection.

Reverse Selection

Deselect everything that is currently selected, and select everything that is currently not selected. This can be useful to perform complicated selections.



MIDI Menu

Config

Select the MIDI devices from which to send and receive. These will be the USB or MIDI connections to your Factor pedal. When connected by USB, the stompbox will appear as “USB Audio Device” on a Windows XP system, or as “Timefactor Pedal” (etc) on a Mac or Windows 7.

Save to Pedal

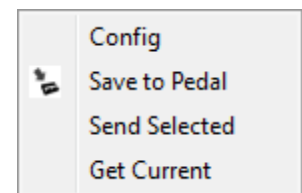
Send the current document or selection to your Factor pedal. It will complain vigorously if the wrong type of pedal is connected.

Send Selected

Send the current selected preset (if any) to your Factor pedal.

Get Current

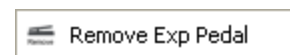
Overwrite the selected preset (if any) on FactorLib with the current preset on your stompbox.



Tools Menu

Remove Exp Pedal

This is a convenience to quickly remove all expression pedal control from the current document or selection.



FactorLib User Manual

View Menu

Edit Console

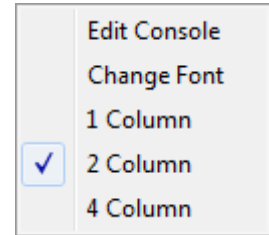
Brings up a console window that allows you to edit presets or control a connected pedal. See below for more information.

Change Font

Allows you to change the text font used. The display will scale with font size.

Select number of columns

Allows you to select the number of columns per document from 1, 2 and 4.



Window Menu

New Window

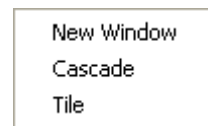
Create a new window giving another view of the currently active document.

Cascade

Arrange multiple windows diagonally down the screen so that they overlap one another, with the active window on top.

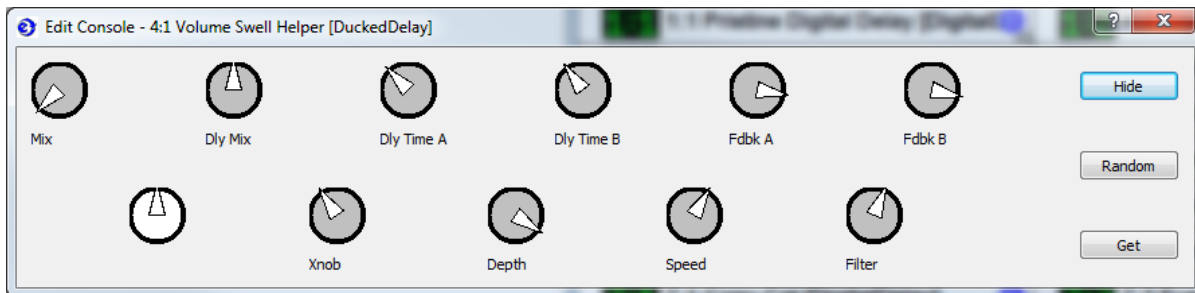
Tile

Arrange multiple windows side-by-side so that they fill the document area. This is mainly useful for line by line comparisons.



FactorLib User Manual

The FactorLib Edit Console



The Edit Console may be displayed by using menu command View/Edit Console. It allows you to the knob settings of a connected Eventide stompbox. Note that the Effect setting (white knob) cannot be changed directly from the Edit Console. Note also that only the positions of the knobs are displayed, not their stompbox screen values.

If an Eventide stompbox is connected by MIDI or USB, be sure that its [MIDI]Sysex Id parameter is set to its default value of 1 and that it has been configured by means of the Midi/Config menu command, Do not disconnect the pedal while FactorLib is running, as FactorLib makes various changes to the pedal's MIDI settings which are restored on exit.

If a single preset is selected while the Edit Console is visible, the knobs will represent the knob settings and the knob labels will be those of the pedal type. If an Eventide stompbox of the same type as the preset is connected, the preset will be sent to it (this will not overwrite any saved presets).

If either no presets or more than one preset are selected, the knobs will be at the 12 o'clock position, and the labels will be generic.

If an Eventide stompbox is connected, knob settings may be changed with the mouse and will be sent to it. The {Random} button can be used to create unexpected settings, which may prove to be either Weird or Wonderful.

If only one preset is selected on FactorLib, the {Get} button may be used to overwrite it with the current settings on a connected pedal. The FactorLib preset number will change from green to red to indicate that it has been changed.

Notice that the Edit Console can only be used to remote control a pedal - it cannot act directly upon the FactorLib presets.

FactorLib User Manual

Installation

FactorLib may be installed on either Windows or Macintosh. Parts of the package are covered by the GNU Lesser General Public license which is included in the installation. In the unlikely event that you wish to customize or modify this software you should only do it according to the terms of this License.

Windows Installation

FactorLib requires Windows XP, service pack 3, Windows 7 or Vista. Its memory and disk requirements are modest. It has not been fully tested on Windows Vista, but is not expected to have problems.

FactorLib is supplied as a self-expanding zip file in .exe form. To install, double-click or run the file. The installer will run, prompt you to accept a License Agreement and give you the option to specify an installation folder. Once the installation is complete you have the option to launch the program.

Macintosh Installation

FactorLib requires OSX 10.5 (Leopard) or later. Its memory and disk requirements are modest. It is supplied as a dual-binary package and may be installed on either Intel or PPC systems. OSX 10.4 or earlier are NOT supported.

Double-click the package to run it and follow any instructions. You will need to enter an Administrator password when requested. Note that while the installer claims to need around 32.0 KB of space, it actually requires just over 28MB.

The main program will be placed in /Applications, while some data files will be placed in /Library/Application Support/FactorLib.

FactorLib User Manual

FactorLib V2.0 Release Notes

Enhancements

- Edit Console allowing editing of stored presets and MIDI/USB remote control
- Multiple selection commands.
- Indication of expression pedal settings

Bugs Fixed

- MIDI did not always function with Windows 7
- The Save command had no effect.
- The backspace key (delete on Mac) did not work.
- The current directory position was not remembered at shutdown.
- Font changes could crash the program.
- No Cancel option was provided on closing a preset window.